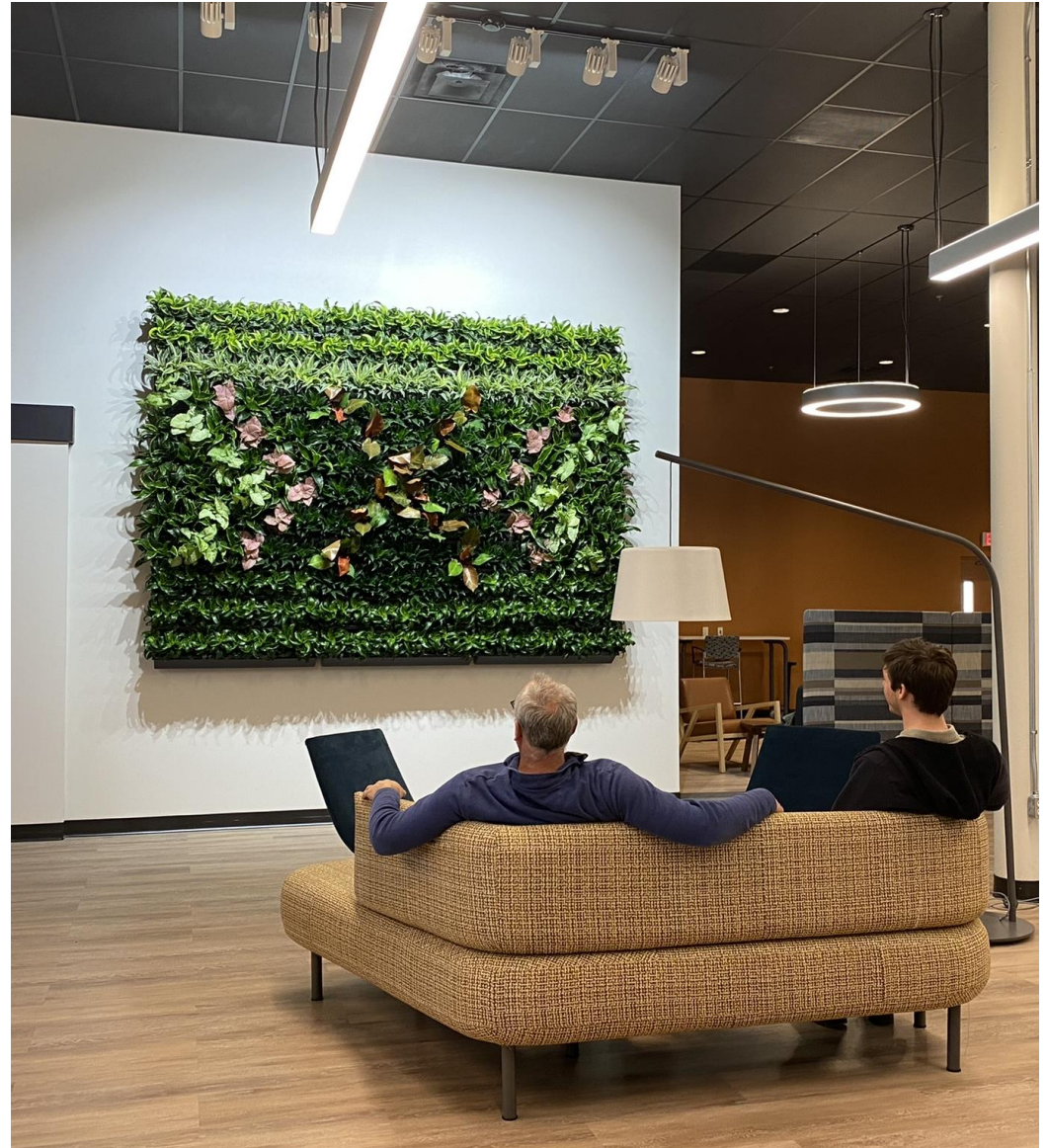


Botanicus PlantMastery Guide

Insights and Expertise to Enhance Success with Indoor Plants Through Initial Concept, Early Planning, Design, and Attention to Environmental Factors



Botanicus

PlantMastery

Guide Recap

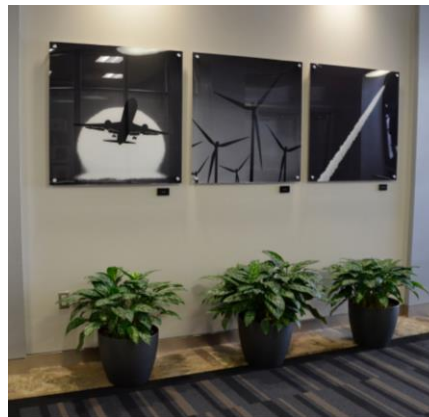
Discover the potential of live plant design with Botanicus, a 50-year innovation pioneer in design, care, and best practices for the interior landscaping industry. Founder Kathryn O'Donnell's lifelong support and contributions to the industry earned her induction into the International Plantscape Hall of Fame in 2018. We are pleased to offer our experience and knowledge to help your effective use of plants in your design process from concept to installation.

This guide is intended to provide a quick introduction to the various options and design concepts that are possible using live plants indoors.

Additional information will be available in our Full "PlantMastery Guide to Interior Landscaping Specifications" Publication soon to be completed. Thank you, from the Botanicus Team!



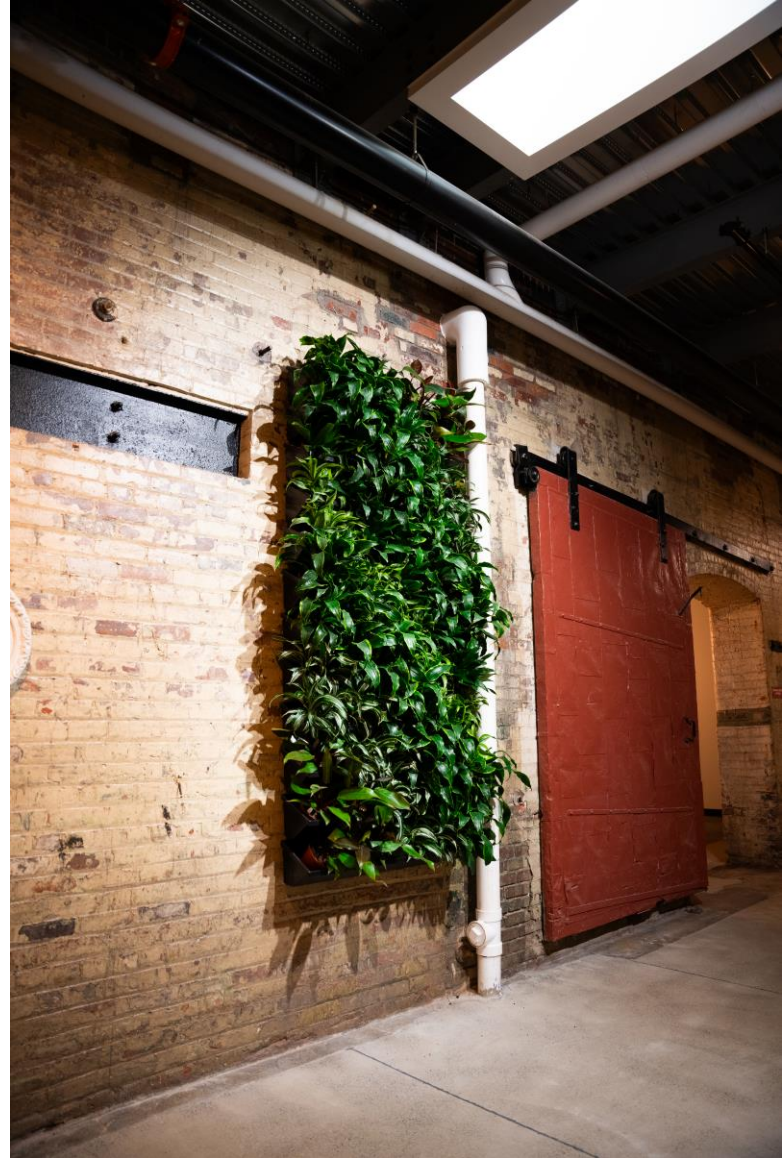
Cornell University Ithaca 2015 Green Wall Original Fiberglass Trays



PlantMastery

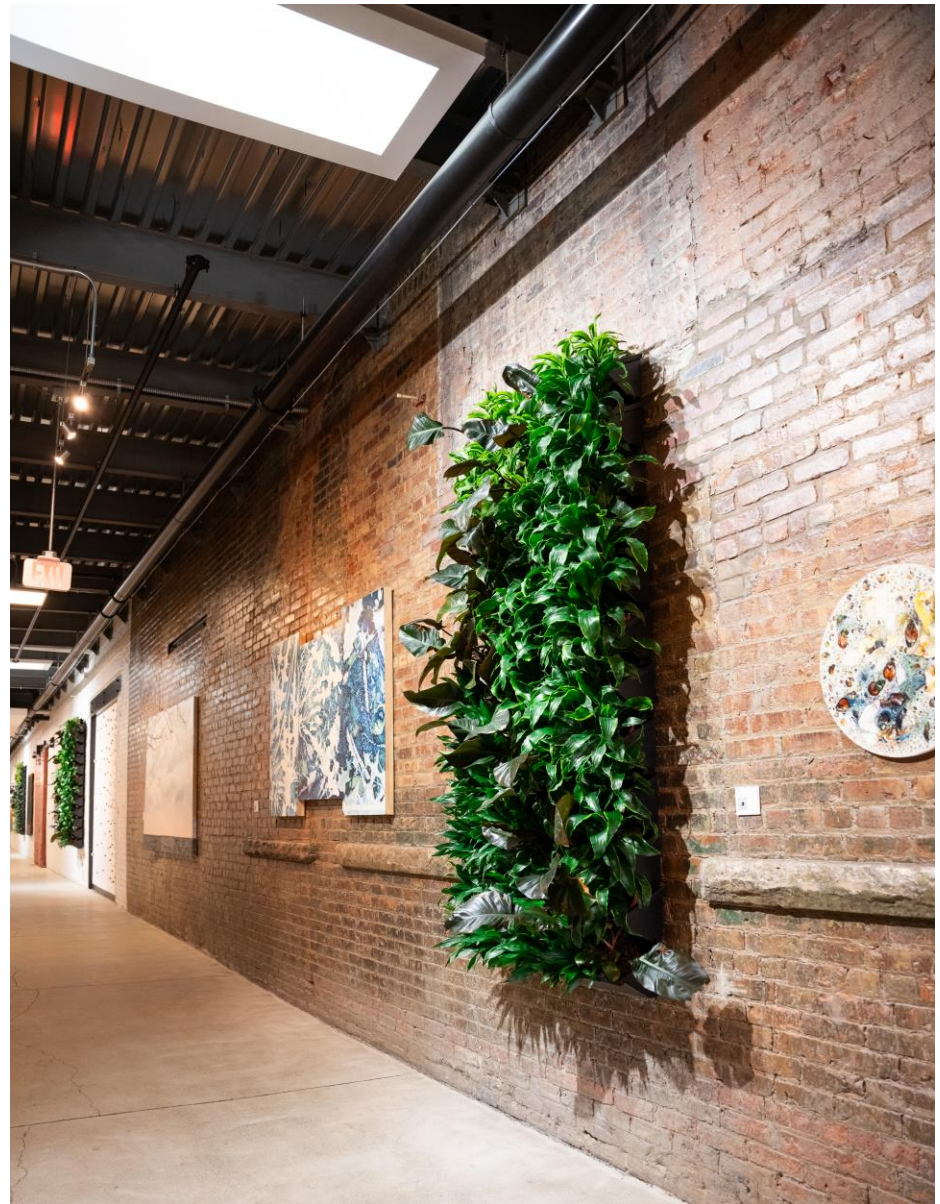
Guide to Interior Landscaping Specifications

- Benefits of Live Plants
- Designing with Live Plants
- Light and Temperature
- Selection and Acclimatization
- Interior Plant Types
- Flowering Plants
- Decorative Planter Basics
- Atrium Inground Planter Basics
- Living Green Wall Basics
- Horticultural Service
- Moss Wall Art Modular Panels
- Faux Plants
- Keys to Success
- Botanicus Grow Happy



Benefits of Live Plants

- Natural Solution to Cleaner Air
- Reduces Stress
- Increases Worker Productivity
- Promotes Wellness and Satisfaction
- Lowers Absenteeism and Illness
- Employee Retention
- Nature as Art
- Biophilic Design
- Natural Privacy Screen
- Improves Image
- Increases Sales
- Inexpensive Facelift
- Noise Reduction

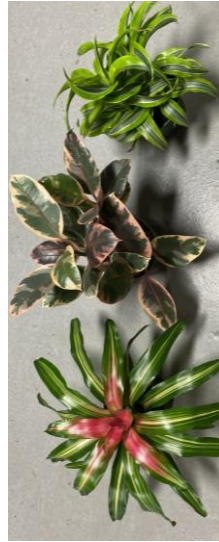


Designing with Live Plants

Live Plants Require Special Care!

Plants are Alive and Require Specific Environmental Conditions to Survive and Thrive

- Adequate Light
- Temperature Range
- Design Criteria
- Plant Selection
- Interior Grown Foliage
- Decorative Planters
- Architectural Enhancement
- Water Access
- Service Access



Designing with Live Plants

- Spatial Layout
- Achievable Goals
- Size and Shape of Plants and Planters
- Budget Considerations
- Reliable Maintenance



Light is Life for Plants

Plants Need Light to Grow, Thrive, and Photosynthesize!

Natural Light Considerations

- ☉ Quality, Quantity, Duration
- ☉ Window Size and Direction
- ☉ Distance from the Window
- ☉ Presence of Window Tint, Curtains, or Shades
- ☉ Season of the Year
- ☉ Partial Obstructions
 - ☉ Awnings
 - ☉ Overhangs
 - ☉ Trees
 - ☉ Other Buildings, etc.

Artificial Light Considerations

- ☉ Quality, Quantity, and Duration
- ☉ LED, Strips, Flood, Spot
- ☉ Timers, Auto Shutoff
- ☉ Reflection of Light



George Eastman House Rochester, NY



Frank Lloyd Wright Darwin Martin Conservatory, Buffalo, NY
Historical Design, Donated, and Serviced by Botanicus

Light is Life For Plants!

Living Green Wall Thrives in Light

- 💧 6 LED Flood Lights on Track
- 💧 Adjustable Multi Angle
- 💧 Dedicated Timer
- 💧 Natural North Window Light

The Plants Thank You!



Upper Falls Rochester, NY

Temperature

Indoor Plants are from Tropical Areas:
They like it Warm and Thrive with a Sustained Environment of 60 to 90 Degrees Fahrenheit

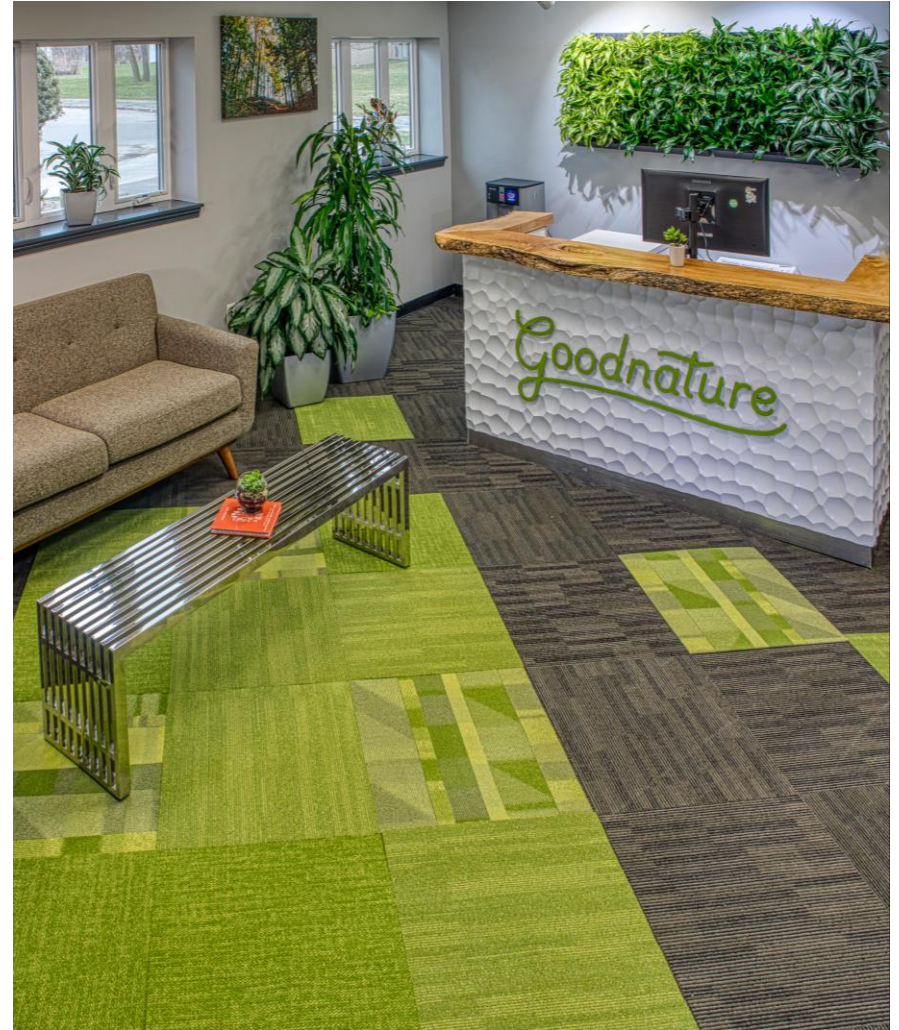
- Warm Air
- Warm Soil
- Warm Water
- Air movement
- Limited Drafts



Selection and Acclimatization

Select Plant Material Custom Grown for Interiors Usually from California, Florida, or Hawaii

- Custom Indoor Soil
- Shade Grown (Outside is 10,000+ Foot Candles and Inside is 500 to 50 Foot Candles)
- Modern Watering and Nutrient Systems
- Eco Friendly Insect and Disease Control
- Climatically Controlled Trucking Company
- Acclimated and Quality Inspected after Shipping



Interior Plant Types

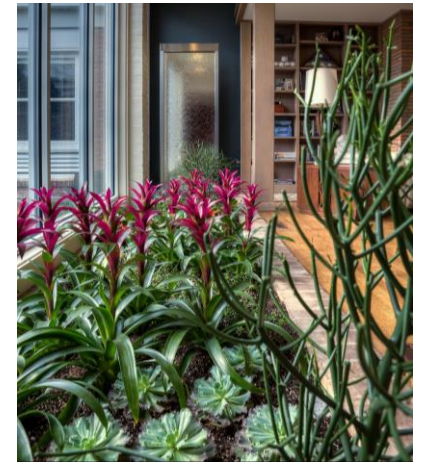
- Aglaonema
- Aralia
- Bromeliad
- Cycad
- Dracaena
- Ficus
- Orchid
- Palm
- Philodendron
- Sansevieria
- Schefflera
- Succulent
- Vine



Flowering Plants

Bromeliads for Rotations

- Aechmea
- Guzmania
- Neoregelia



- ☛ Designer Planters
- ☛ Beautiful
- ☛ Colorful
- ☛ Custom Colors
- ☛ Fast Turnaround



Decorative Planter Basics

- ☿ Size
- ☿ Style
- ☿ Shape
- ☿ Color
- ☿ Finish
- ☿ Material
- ☿ Sustainability
- ☿ Direct Planted
- ☿ Liners
- ☿ Waterproof
- ☿ Sweatproof
- ☿ Availability

Phoenix
80% Recycle Material
Fits 6" to 24" Grow Pots
LEEDS Credit



Rise
Made From Recycled
Post-Consumer Materials
6 Shapes Available



**Epic Reclaimed
Barnwood**
3 shapes
4 sizes



Athena
12 Sizes
Fits 4" to 17" Grow Pots



Bravo
Floor Planters & Talls
5 Sizes Available



Earth
Bowls, Low Profile Bowls,
Cubes, Tall Squares,
Walls, File Top, Cylinders,
Tall Cylinders, Spheres,
Sculptures



European
4" to 38" Grow Pots
To 60" High



Diamond
Floor & Table - 4 Sizes
Talls - 3 Sizes



Optimum One
12 Sizes
4" to 17" Grow Pots
7" to 36" High



Ovation
11 Sizes
4" to 14" Grow Pots
7" to 52" High



Symmetry
Round and Square
4" to 17" Grow Pots
Up to 57" Tall



Tier
4 Styles
6" to 54" High



**Tapered
Cylinders**
7 sizes
6" to 30" Grow Pots



Ironclad
3 Shapes
11 Sizes



Light Stone
3 Shapes
5 Sizes
3 finishes



Salvaged Wood
Cubes, Tall Squares, Floor
Rectangles, File Top
Rectangles



Strong Clay
Squares, Tall Squares,
Rectangles, Cylinders,
Bottom Radius



**Sustainable
Beech Wood
Stands**
Light and Dark Finishes



**Moss Wall Room
Dividers**
One-sided or Two-sided,
4" and 6" Models, Easy to
Connect



Moss Wall Art
4 Frame Sizes
3 Frame Colors
16 insert options
Easy to Install and Change



Plantups
Green Wall Vertical Planter Kits
4" to 8" Grow Pots



Living Green Walls
Living Walls & Room Dividers



Atrium Inground Planters



Atrium Inground Planters Basics

- Simulates Nature
- Goals for Use and Design of Space
- Planter Bed Size, Depth, and Drainage
- Planter Temperature, Insulation
- Preparation for Planting
- Soil Medium and Drainage Material Options
- Water Source Options
- Light and Skylights
- Temperature, Air Movement, and HVAC



Living Walls

Create the Sensational WOW Factor, Especially in Today's Environment

Sustains a Welcoming Allure, a Healthy Climate and a Sense of Security

Plant Up Your Wall, Play Up Your Space



Living Green Wall Basics

- Size, Shape, Location, Access
- Natural Light or Additional Flood or LED Lights, on Dedicated Timer
- Drain to Plumbing or No Drain
- Recessed or Surface Mounted
- Programmed Water System or Water Machine Brought to Wall for Service
- Tray System, Wicks, with Easy Change Out
- Pre-grown Panels
- Hydroponic Planted in Place
- Color Plant Rotations
- Geometric or Organic Tapestry Design
- Nod to Logo Pattern



THE
GRD

Horticultural Service

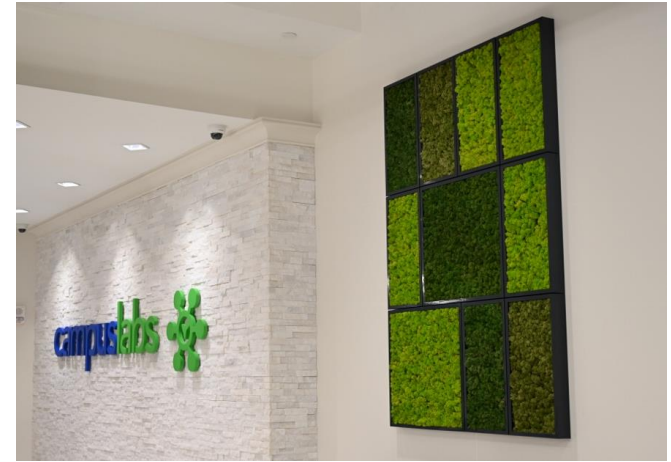
Live Plants are Successful with Expert Experienced Care

- Light is Life for Plants
- Experience Matters
- Monitoring and Managing Environmental Factors
- Expert Watering Systems
- Fertilizer and Nutrients
- PH Adjustment
- Dusting and Cleaning
- Trimming and Pruning
- Disease and Insect Identification and Resolution
- Refreshing and Redesigning
- Reliable and Professional
- Safety and Scheduling



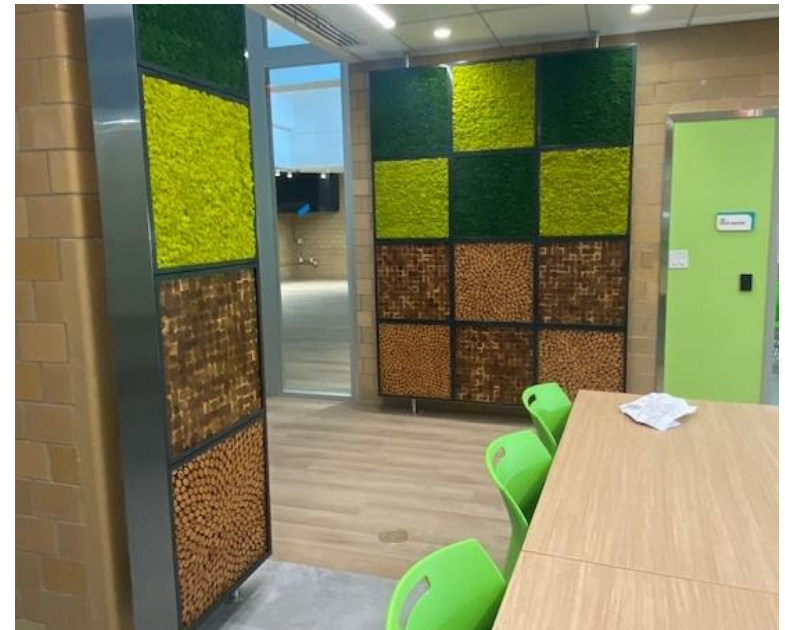
Moss Wall Art

Modular Systems with Reindeer Moss, Pole Moss, Bark Options, Light Stone Options, New Live Plant Panel Inserts



Moss Wall Art Modular Panels

- Modular Moss Wall Art
- Nature as Art
- Reindeer Moss Naturally Dries, No Watering Needed
- No Sun or Light Required
- Acoustical Reduction Properties
- Lightweight, Easy to Ship, Easy to Install
- Moss Color Options: Lime, Medium, Forest Green, Pole Moss
- Frame Color Options White, Gray, Black
- Size Options 1'/2', 2'/2' or 2'/4' to Create Your Own Wall Design
- New Live Wall Inserts 2' by 2'



Faux Plants



Keys to Success

Early Planning and a Trusted Professional Support Team are the Keys to Success



Award Winning Interior
Landscaping Design and
Service for 50+ Years

Bringing Nature
to People Indoors

- 🌿 Interior Landscaping
Design & Installation
- 🌿 Plantups Green Walls
- 🌿 Moss Wall Art
- 🌿 Expert Plant Care

www.botanicus.com

For Green Design Inspiration
716-691-7200 Buffalo
585-464-8333 Rochester
1-800-99GROWS (994-7697)
PlantMastery@Botanicus.com

